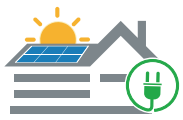


# LIVOLTEK



## Grid Tied Inverter

Single Phase: GT1-1K6/2K2/3K/3K3 S1

The LIVOLTEK GT1-1.6/2.2/3.0/3.3K-S1 is an economical mini inverter developed and designed for home use. GT1 series has advanced topology and precise MPPT algorithm, with the highest conversion efficiency up to 97.8%. It is suitable for different grid voltage ranges in many parts of the world, mainly covering 220V and 230V. Equipped with Wi-Fi and bluetooth dual wireless monitoring function, these inverters are convenient and easy to operated.



### Features

- 150% DC/AC ratio
- Export limitation (optional)
- Smart APP to monitor & optimize
- AFCI (optional)
- Plug-and-play installation saves time
- 110% AC output for efficient power generation



Maximum Efficiency of 97.8%



Smart APP to Monitor & Optimize



Optional Internal Integrated AFCI Module

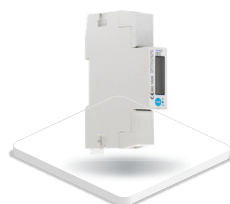


Plug-and-play Installation Saves Time

### Compatible Products



Wi-Fi Dongle



Smart Meter



Monitoring System

## Specifications

Model	GT1-1K6S1	GT1-2K2S1	GT1-3KS1	GT1-3K3S1
<b>PV Input</b>				
Max. PV Input Power	2400Wp	3300Wp	4500Wp	4950Wp
Max. PV Input Voltage	550V			
Min. PV Input Voltage	50V			
Start-up Input Voltage	70V			
Nominal Input Voltage	360V			
MPPT Voltage Range	50-545V			
Max. PV Current	14A			
Max. Short Circuit Current	20A			
No. of MPPTs/Strings per MPPT	1/1			
<b>AC Output</b>				
Nominal AC Power	1600W	2200W	3000W	3300W
Max. Apparent Power	1760VA	2420VA	3300VA	3300VA
Rated AC Grid Output Current	7.0A	9.6A	13.0A	14.3A
Max. AC Output Current	7.7A	10.5A	14.3A	14.3A
Rated AC Grid Voltage	220V/230V/240V, L+N+PE			
AC Grid Voltage Range	160V-300V (Adjustable)			
Rated Grid Frequency	50Hz/60Hz			
Grid Frequency Range	45Hz-55Hz/55Hz-65Hz (Adjustable)			
Power Factor	> 0.99 Rated Power (Adjustable 0.8 Leading - 0.8 Lagging)			
THDi, Rated Power[%]	<3%			
<b>Efficiency</b>				
Max. Efficiency	97.5%	97.5%	97.8%	97.8%
Euro Efficiency	96.9%	96.9%	97.3%	97.3%
MPPT Efficiency	>99%			
<b>Protection</b>				
Surge Arrester	Type III / Type II (Optional)			
PV Current Detection	Support			
AC Short Circuit Protection	Support			
Anti-islanding Protection	Support			
Ground Fault Monitoring	Support			
Residual Current Monitoring Unit	Support			
DC Reverse Polarity Protection	Support			
Anti-arc Protection	Optional			
<b>General Data</b>				
Dimension (W*H*D)	280*300*140mm			
Weight	6.5kg			
Protection Degree	IP65			
Cooling	Natural Cooling			
Operating Temperature Range	-30°C ~ +60°C (Derating at 45°C)			
Typical Noise Emission	< 25dB			
Night Self Consumption	< 1W			
Display	LED+APP			
Communication	RS485 (Meter), Wi-Fi+Bluetooth, DRM			
Topology	Transformerless			
<b>Certifications and Standards</b>				
Grid Regulation	IEC61727, IEC62116, EN50549, ABNT NBR 16149, ABNT NBR 16150, UL 1741, IEEE 1547			
Safety/EMC Standard	IEC/EN 62109-1/-2, IEC/EN 61000-6-1/-2/-3/-4			
Standard Warranty	5 Years/10 Years (Optional)			